

## Hybrid Inverter

# Quick Installation Guide

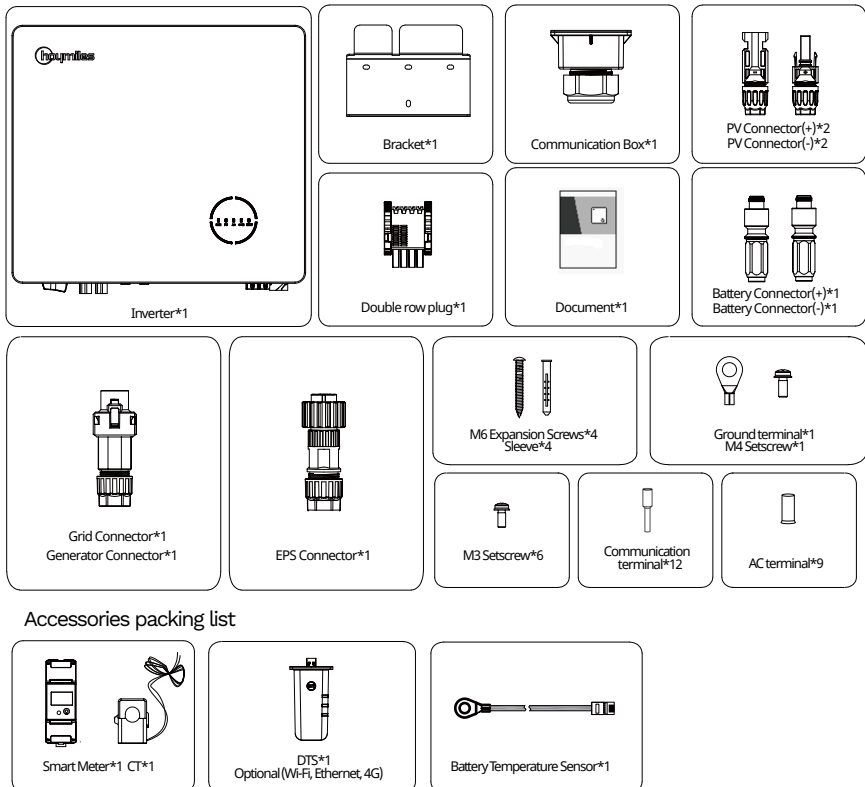
---

HYS-3.0LV-EUG1  
HYS-3.6LV-EUG1  
HYS-4.6LV-EUG1  
HYS-5.0LV-EUG1  
HYS-6.0LV-EUG1

## 1 General Declaration

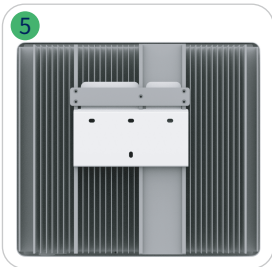
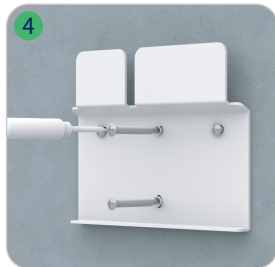
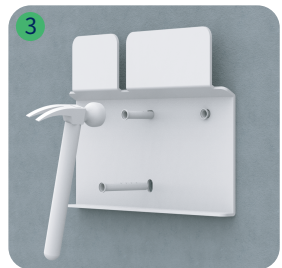
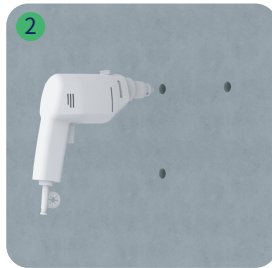
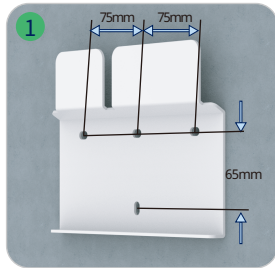
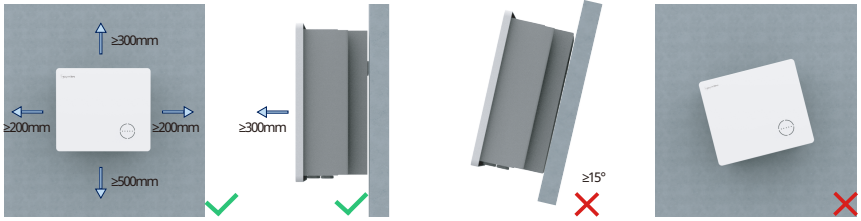
- The information in this quick installation guide is subject to change due to product updates or other reasons.
- This guide cannot replace the product labels or the safety precautions in the user manual unless otherwise specified. All descriptions here are for guidance only.
- Before installations, read through the quick installation guide and the user manual to learn about the product and the precautions.
- All installations should be performed by trained and knowledgeable technicians who are familiar with local standards and safety regulations.
- Check the deliverables for correct model, complete contents, and intact appearance. Contact the manufacturer if any damage is found or any component is missing.
- Use insulating tools and wear personal protective equipment when operating the equipment to ensure personal safety. Wear anti-static gloves, clothes, and wrist strip when touching electron devices to protect the inverter from damage. The manufacturer shall not be liable for any damage caused by static electricity.
- Strictly follow the installation, operation, and configuration instructions in this guide and user manual. The manufacturer shall not be liable for equipment damage or personal injury if you do not follow the instructions.
- All cables in this article are copper cables.

## 2 Packing List



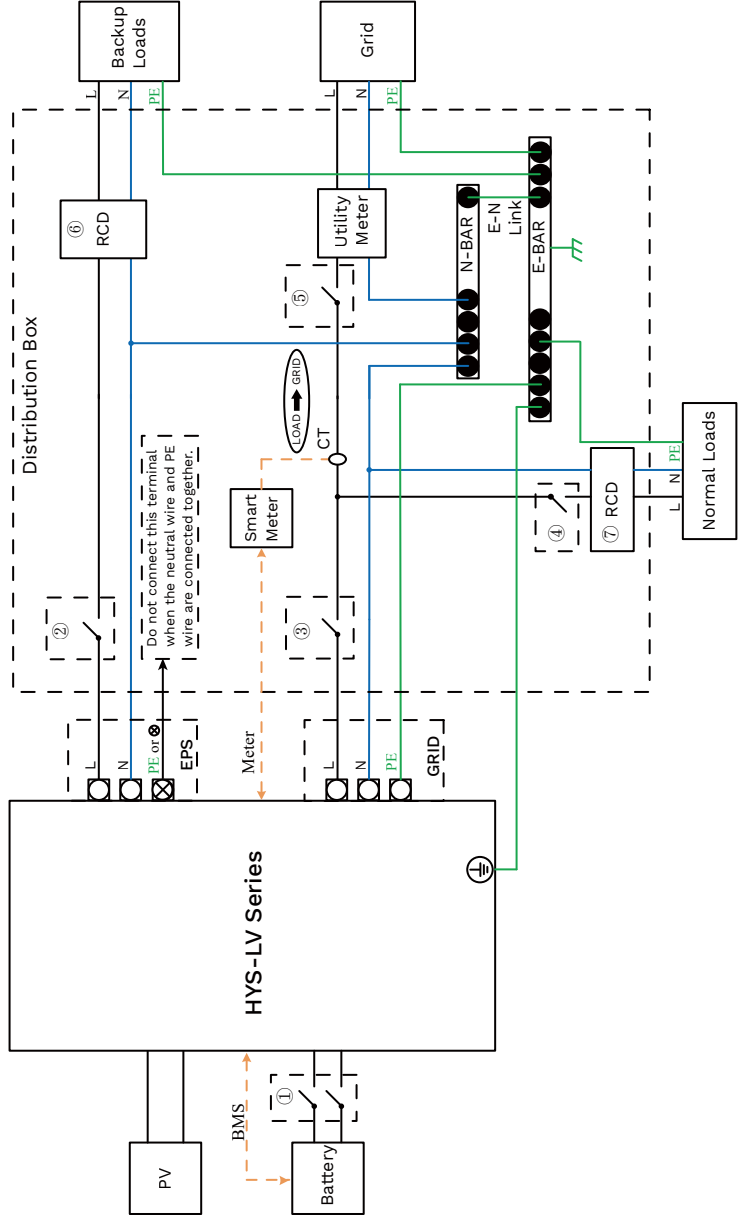


### 3 Mounting the Inverter



## 4 Wiring Diagram

Wiring diagram for countries such as Australia, New Zealand, South Africa, etc.  
 Please follow local wiring regulations.

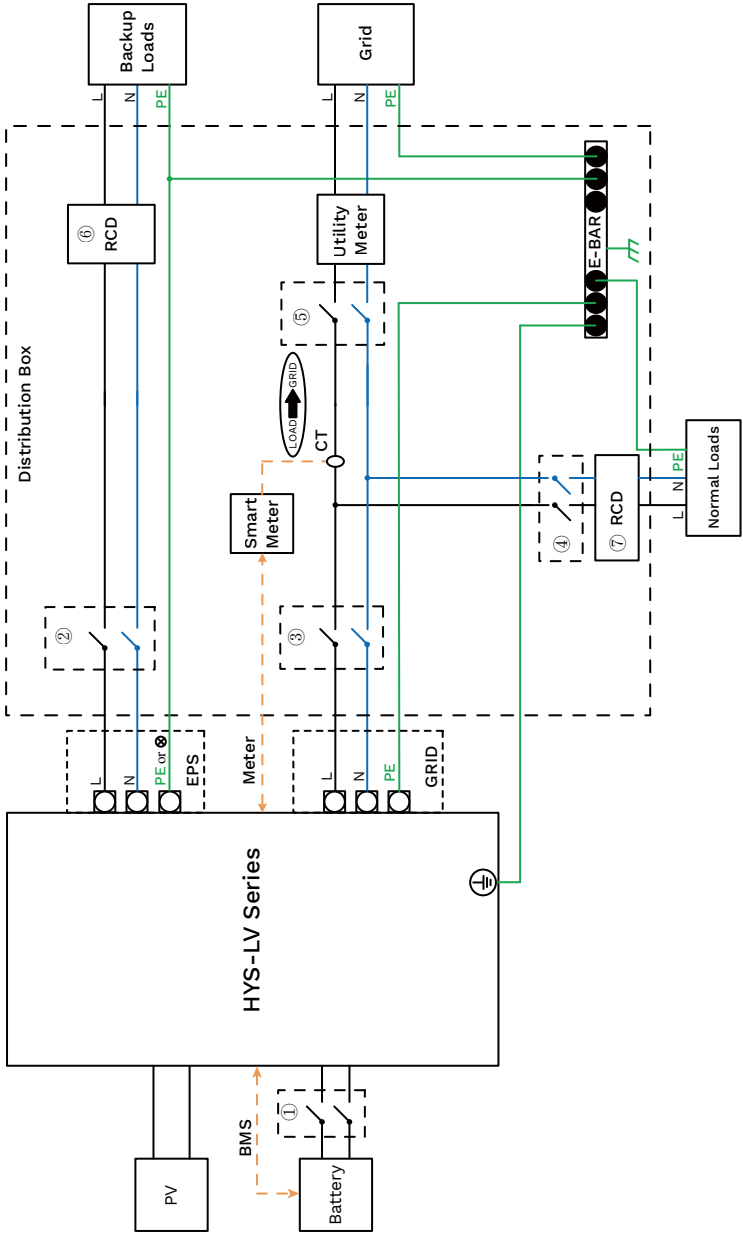


Model	①	②	③	④	⑤	⑥⑦
HYS-3.0LV-EUG1	100A/60V DC Breaker	20A/230V AC Breaker	40A/230V AC Breaker	Depends on Loads	Main Breaker	30mA RCD
HYS-3.6LV-EUG1	125A/60V DC Breaker	20A/230V AC Breaker	40A/230V AC Breaker			
HYS-4.6LV-EUG1	125A/60V DC Breaker	25A/230V AC Breaker	40A/230V AC Breaker			
HYS-5.0LV-EUG1	125A/60V DC Breaker	32A/230V AC Breaker	40A/230V AC Breaker			
HYS-6.0LV-EUG1	125A/60V DC Breaker	40A/230V AC Breaker	40A/230V AC Breaker			
		40A/230V AC Breaker	40A/230V AC Breaker			

**Note:**

- If the battery has integrated a readily accessible internal DC breaker, then no additional ① DC breaker is required.
- ⑥⑦ 30mA RCD , please comply with local regulations for the system installation.

Wiring diagram for other countries, please follow local wiring regulations.



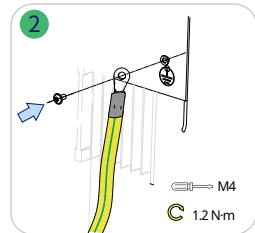
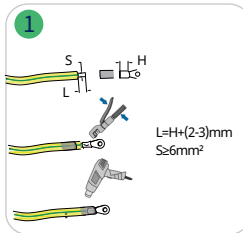
Model	①	②	③	④	⑤	⑥⑦
HYS-3.0LV-EUG1	100A/60V DC Breaker	20A/230V AC Breaker	40A/230V AC Breaker	Depends on Loads	Main Breaker	30mA RCD
	125A/60V DC Breaker	20A/230V AC Breaker	40A/230V AC Breaker			
HYS-4.6LV-EUG1	125A/60V DC Breaker	25A/230V AC Breaker	40A/230V AC Breaker			
	125A/60V DC Breaker	32A/230V AC Breaker	40A/230V AC Breaker			
HYS-5.0LV-EUG1	125A/60V DC Breaker	40A/230V AC Breaker	40A/230V AC Breaker			
HYS-6.0LV-EUG1	125A/60V DC Breaker	40A/230V AC Breaker	40A/230V AC Breaker			

**Note:**

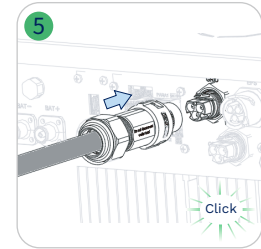
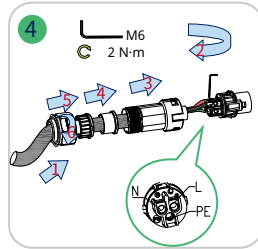
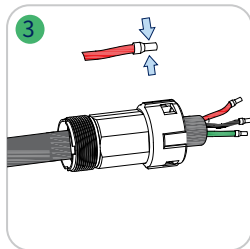
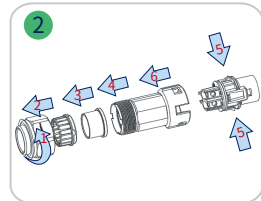
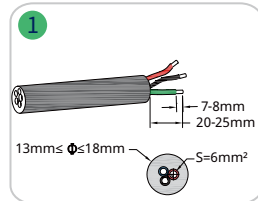
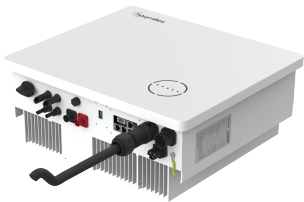
- If the battery has integrated a readily accessible internal DC breaker, then no additional ① DC breaker is required.
- The use of ⑥⑦ 30mA RCD is recommended but not mandatory, please comply with local regulations for the system installation.

## 5 Electrical Connection

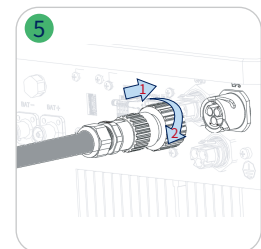
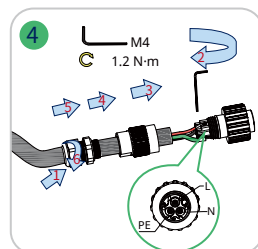
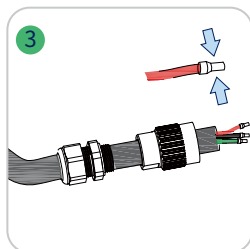
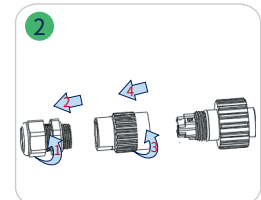
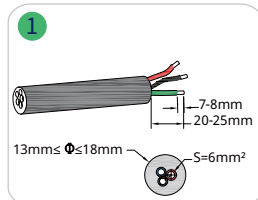
### Step 1 Grounding Protection Wire



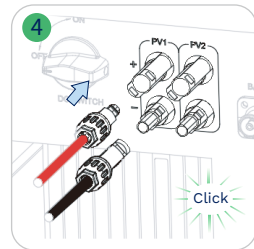
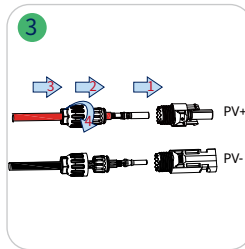
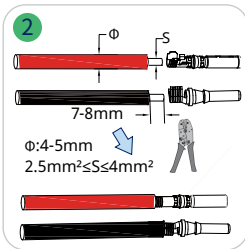
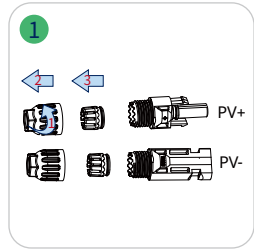
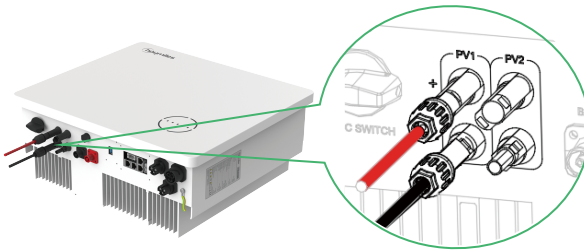
### Step 2 Grid (Same wirings for GEN connector, leave it alone if not used)



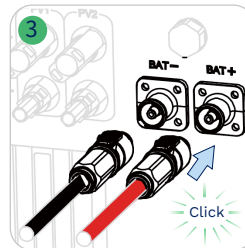
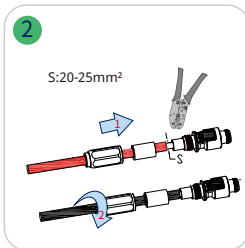
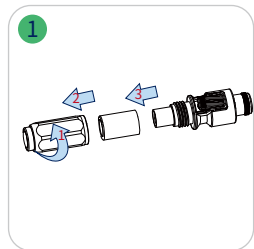
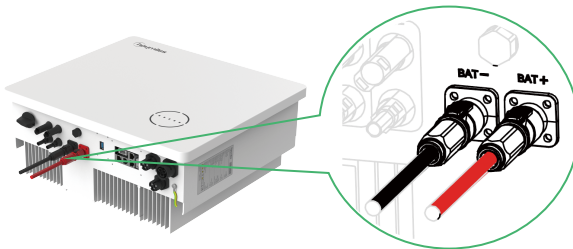
### Step 3 EPS



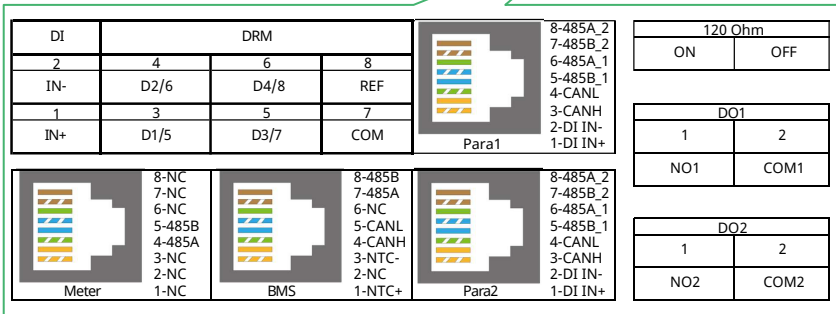
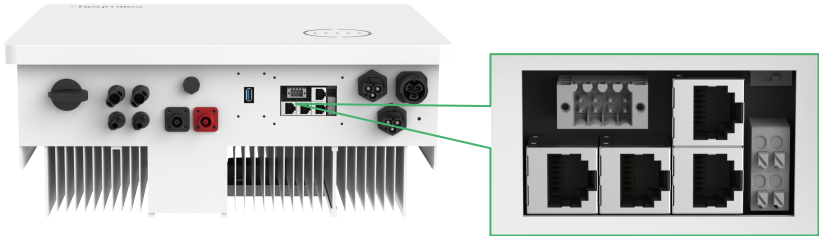
### Step 4 PV



### Step 5 Battery



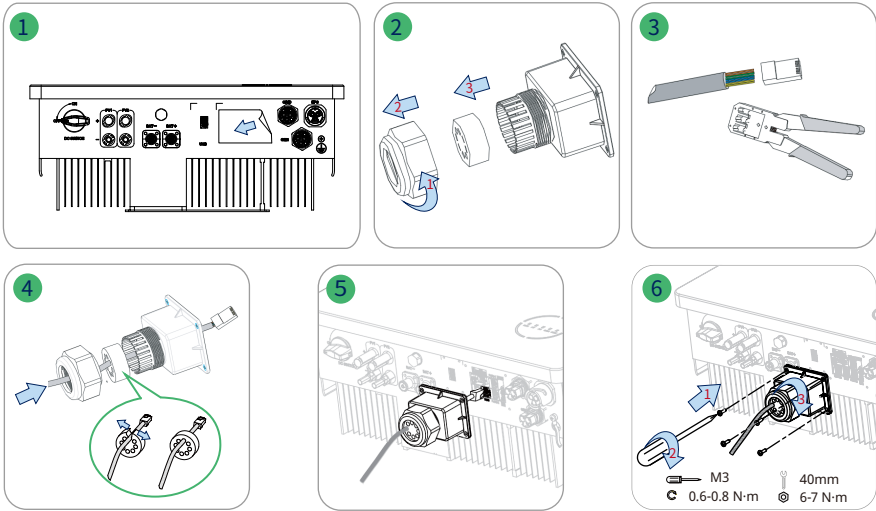
**Step 6 Signal Communication (Connection of communication box is mandatory)**



Label	Description
Meter (485A, 485B)	For the Smart Meter.
BMS (NTC+, NTC-, CANH, CANL, 485A, 485B)	For Li-ion battery communication via CAN or RS485. For lead-acid battery temperature is monitored via sensor through NTC+ and NTC-.
DRM (D1/5, D2/6, D3/7, D4/8, REF, COM)	For external Demand Response Enabling Device.
DI (IN-, IN+)	Dry-contact input of external bypass contactor.
Parallel (DI IN+, DI IN-, CANH, CANL, 485A_1, 485B_1, 485A_2, 485B_2)	For parallel operation.
120 Ohm (ON, OFF)	120 Ohm termination resistor for parallel operation.
DO1 (NO1, COM1)	Dry-contact output. The DO1 will control the bypass contactor under certain logic.
DO2 (NO2, COM2)	Dry-contact output. The DO2 can be set to one of the functions as follows: Earth Fault Alarm, Load Control, Backup Load Smart Control, and Generator Control.

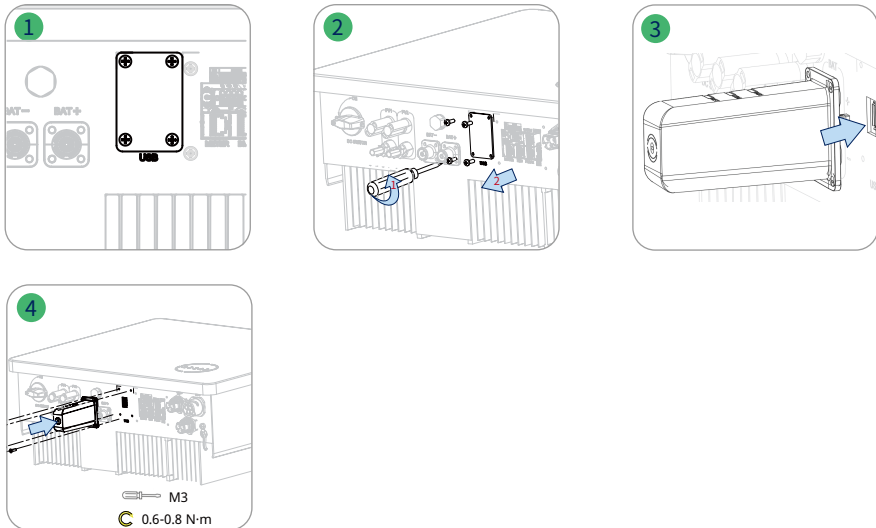


### RJ45 Terminal Connection (METER, BMS)



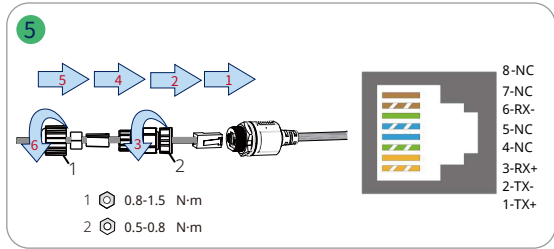
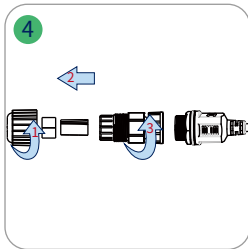
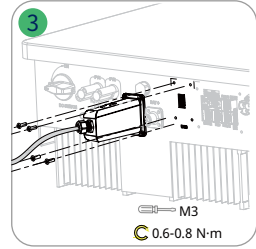
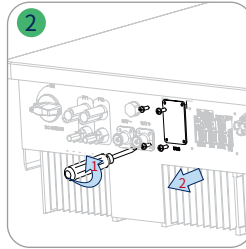
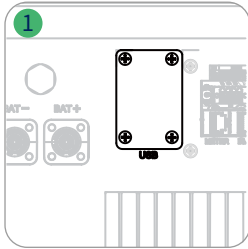
### Step 7 Data Transfer Stick (DTS)

#### WIFI Connection



## Step 7 Data Transfer Stick (DTS)

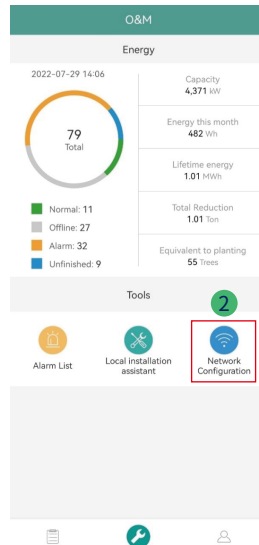
### Ethernet Connection



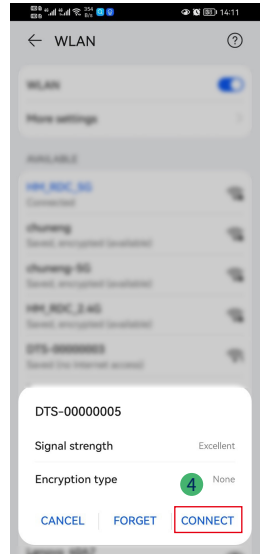
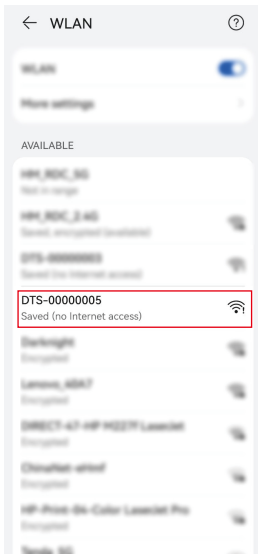
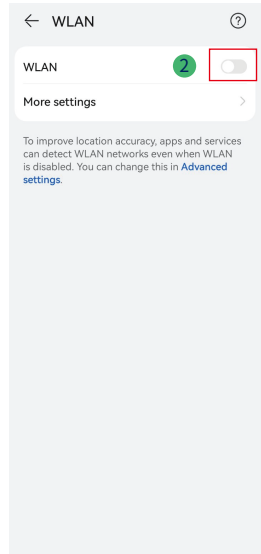
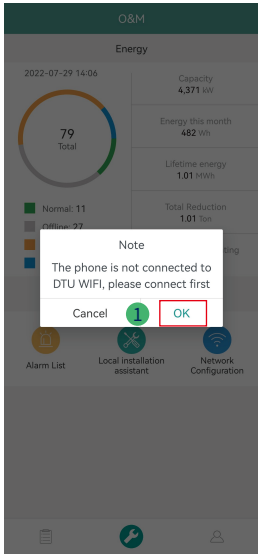
## 6 DTS Online Setting



1. Search “Hoymiles” in the App Store (iOS) or the Play Store (Android), or scan the QR code to download the Hoymiles Installer App.
2. Open the app and log in with your installer account and password. For new Hoymiles installers, please apply for an installer account from your distributor in advance.
3. Use the App to connect to the DTS.
  - (a) Open the Installer App on smartphone/tablet and log in. Click on “O&M” at the bottom of the page then click on “Network Configuration”.

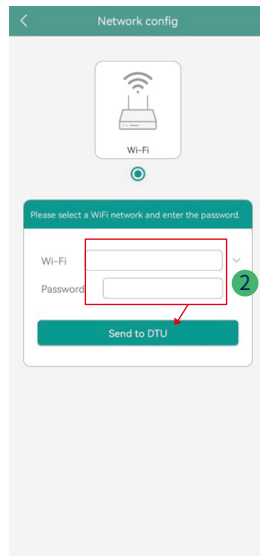
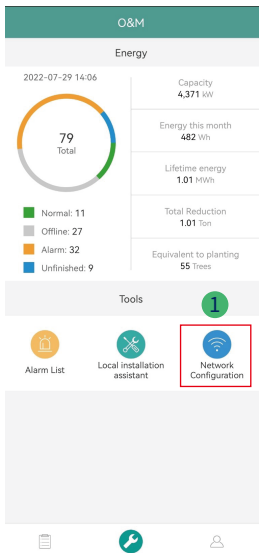


(b) Select the DTS's wireless network and click Connect. (The network name of the DTS consists of DTS and product serial number, and the default password is **ESS12345**)



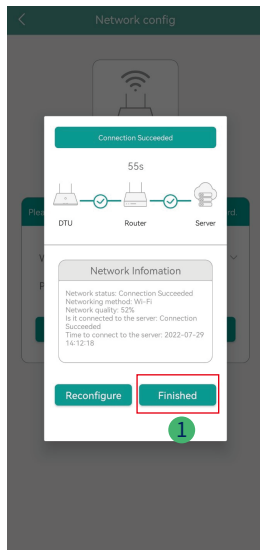
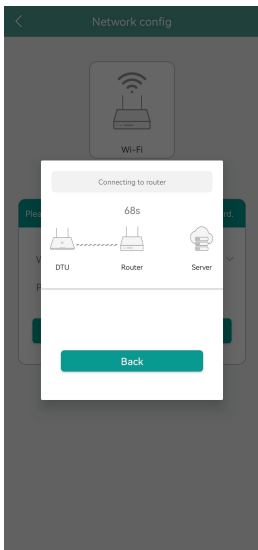
4. Network configuration.

- (a) Upon successful connection, click on "Network Configuration" again and access the Network Configuration page.
- (b) Select the router Wi-Fi and enter the password.
- (c) Click on "Send to DTU".



5. Check the DTS indicator for a solid blue light, which signifies a successful connection.

The network configuration takes about 1 minute, please be patient. If the network is not connected, please check the internet as instructed.





User Manual in the QR code or at  
[www.hoymiles.com/resources/download/](http://www.hoymiles.com/resources/download/)



**Hoymiles Power Electronics Inc.**

Add: No.18 Kangjing Road, Hangzhou 310015, P.R. China

Tel: +86 571 2805 6101

Email: [service@hoymiles.com](mailto:service@hoymiles.com)

[support@hoymiles.com](mailto:support@hoymiles.com)

[www.hoymiles.com](http://www.hoymiles.com)



AP040642